



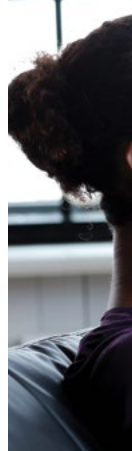
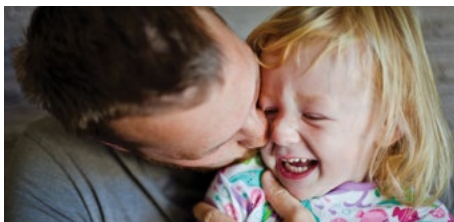
*Stronger today. Brighter tomorrow.*

21<sup>ST</sup> ANNUAL  
**DRIVE FOR YOUTH**  
GOLF OUTING



**OCTOBER 5, 2020 • JERICHO NATIONAL GOLF CLUB**

*Supporting programs and services that help Bucks County  
individuals, children and families in need*



Over the past 20 years, the Drive for Youth Golf Outing has supported Family Service programs that directly benefit children and families in Bucks County. All contributions received will be unrestricted and will be utilized to fulfill the mission of Family Service. Our mission is to listen, care and help. Every day.

## DRIVE FOR YOUTH GOLF OUTING DETAILS

October 5, 2020 • Jericho National Golf Club • New Hope, PA 18938

10:30 AM Registration, boxed lunch, driving range and putting contest

12:00 PM Shotgun start; scramble format

5:30 PM Outdoor cocktail hour and awards

*All components of the event will take place outdoors. The event will be held rain or shine.*

## PARTICIPATION OPPORTUNITIES

**Golf Options: \$300 per individual golfer or \$1,200 per foursome**

Each golfer's registration includes lunch, driving range access, refreshments during course play, green and cart fees, a golf gift and drinks after the round.

## PROGRAM ADVERTISEMENTS

Programs are distributed to all golfers, sponsors and advertisers. Email full color, high resolution PDF or JPEG artwork to [nbedesem@fsabc.org](mailto:nbedesem@fsabc.org) by September 18<sup>th</sup>.

<b>Inside Cover: \$750</b>	5" w x 8" h	<b>Quarter Page: \$150</b>	2.375" w x 3.875" h
<b>Full Page: \$500</b>	5" w x 8" h	<b>Logo: \$75</b>	2.375" w x 1.8125" h
<b>Half Page: \$250</b>	5" w x 3.875" h		

## HOW TO REGISTER

To register for the 21<sup>st</sup> annual Drive for Youth Golf Outing, please complete and return the attached registration form by **September 18, 2020**. You can also register on our website at [www.fsabc.org/golf](http://www.fsabc.org/golf).



## SPONSORSHIP OPPORTUNITIES

### **Children's Greatest Needs Sponsor: \$10,000**

The needs of our community change over time, and we pride ourselves on being able to adapt to meet those ever-changing needs. Your donation of \$10,000 will help us continue to meet the most urgent needs facing children and families in our community. *Benefits: 2 foursomes, full-page program ad, banner at event, logo on tee sign, recognition on social media and in press release, website link*

### **Child Abuse Prevention Sponsor: \$5,000**

The COVID-19 pandemic has caused major economic devastation, increased isolation, and additional stress for many families. Such conditions may stimulate violence in families where it didn't exist before and worsen situations in homes where mistreatment has occurred. Your donation of \$5,000 could provide 50 virtual home visits with families to ensure children's health and well-being. *Benefits: 1 foursome, full-page program ad, logo on tee sign, recognition on social media and in press release, website link*

### **Suicide Prevention Sponsor: \$2,500**

We prevent suicide by answering National Suicide Prevention Lifeline and CONTACT Helpline calls. Your donation of \$2,500 could allow our team to answer 50 suicide prevention calls and provide much-needed follow up to connect callers with life-saving resources and services. *Benefits: 2 golfers, full-page program ad, logo on tee sign, recognition on social media and in press release, website link*

### **Families in Recovery Sponsor: \$1,000**

We offer support and education to families, parents and children who have been impacted by addiction. Your donation of \$1,000 could provide 4 weeks of recovery group sessions to help 12 parents with substance use disorders learn healthy coping and parenting skills. *Benefits: Full-page program ad, logo on tee sign, recognition on social media and in press release, website link*



### **Parent Education Sponsor: \$500**

COVID-19 has disconnected many families from community resources and support systems, creating widespread uncertainty. Your donation of \$500 could support a virtual Family Night for parents across Bucks County. These Family Nights provide access to educational content, connect with resources and schools, and reduce the stress of parenting in the pandemic. *Benefits: Half-page program ad, logo on tee sign, recognition on social media and in press release, website link*

### **Learning Lab Sponsor: \$250**

Many children are returning to school virtually. This is especially difficult for children who are homeless and do not have the space, tools, or support to participate in online classes and related educational activities. Your donation of \$250 could provide support throughout the school year for one child or teen living at the shelter including appropriate space, equipment, and on-site Teachers' Aides. *Benefits: Logo on tee sign, recognition on social media and in press release, website listing*

### **Child Counseling Sponsor: \$100**

Many children are struggling with all of the recent changes in our communities and in their homes and schools. Your donation of \$100 could provide 1 virtual counseling session for a child who is experiencing anxiety, depression, or other issues during this challenging time. *Benefits: Recognition on social media, website listing*

### **Food Pantry Sponsor: \$50**

Food insecurity has gone up dramatically since the pandemic began, and our Food Pantry is serving more families per week than ever before. Your donation of \$50 could provide 1 family with 3 days' worth of healthy food, which is either by picked up at our office or delivered directly to the home by our staff. *Benefits: Website listing*





## **ABOUT FAMILY SERVICE**

Family Service Association of Bucks County is a nonprofit 501(c)(3) social service organization with locations throughout Bucks County, Pennsylvania. Our mission is to listen, care and help. Every day. Last year, nearly 30,000 people turned to us for help and support to overcome a broad range of challenges.

## **ACTING CHIEF EXECUTIVE OFFICER**

Julie Dees, MA, LPC

## **FAMILY SERVICE BOARD OF DIRECTORS**

Gary P. Lux, ChFC, CFP, President; Deborah B. Van Aken, PhD, 1<sup>st</sup> Vice President; Subrenie Thomas-Smith, 2<sup>nd</sup> Vice President; Brad Phillips, Secretary; Joseph J. Stoll, Esq., Treasurer; Mark S. Cappuccio, Esq.; William E. Clark; Sonja Foster-Storch; Matthew J. Frederickson; Alice Cahill Gens; Bernadette Handler, JD, RN; Fred P. Hessenthaler, CPCU; Daniel P. Lawlor, MBA, SPHR; Margaret M. Mohr; Gwen Scott-Hodges; Francis J. Sullivan, Esq.; Christine M. Zador-Silverman, DO

## **DRIVE FOR YOUTH COMMITTEE**

Brian Rodgers, Co-Chair; Francis J. Sullivan, Co-Chair; Louis J. Altomari; Michael J. Borski; Ben Ciliberto; William E. Clark; Fred P. Hessenthaler; Tom Maclin; Michael J. Mattie; Michael T. McGuire; David R. Ohman; John Philipp; Jessica J. Sweeney; Natalie Tapykoff; Brian Tierney

## **QUESTIONS?**

Contact Kim Strong at [kstrong@fsabc.org](mailto:kstrong@fsabc.org) or 215.757.6916, ext. 218. You can also visit [www.fsabc.org/golf](http://www.fsabc.org/golf) to learn more.

Family Service Association of Bucks County  
4 Cornerstone Drive, Langhorne, PA 19047 | [www.fsabc.org](http://www.fsabc.org)

# DRIVE FOR YOUTH GOLF OUTING REGISTRATION FORM

Please complete and return this form by **September 18, 2020** or register on our website at **www.fsabc.org/golf**.

Name \_\_\_\_\_ Company/Organization \_\_\_\_\_

Address \_\_\_\_\_

City \_\_\_\_\_ State \_\_\_\_\_ Zip \_\_\_\_\_

Phone \_\_\_\_\_ Email \_\_\_\_\_

## GOLF OPTIONS

\$300 Individual Golfer Qty. \_\_\_\_\_

\$1,200 Foursome Qty. \_\_\_\_\_

Name(s) of Golfer(s)  
\_\_\_\_\_  
\_\_\_\_\_  
\_\_\_\_\_

## SPONSORSHIP LEVELS

\$10,000 Children's Greatest Needs

\$5,000 Child Abuse Prevention

\$2,500 Suicide Prevention

\$1,000 Families in Recovery

\$500 Parent Education

\$250 Learning Lab

\$100 Child Counseling

\$50 Food Pantry

## DONATION

I regret that I cannot attend; however, I am enclosing a tax deductible gift of \$ \_\_\_\_\_

## PROGRAM ADVERTISEMENTS

\$750 Inside Cover

\$500 Full Page

\$250 Half Page

\$150 Quarter Page

\$75 Logo

*For logos, tee signs and program ads, please email full color, high res PDF or JPEG artwork to [nbedesem@fsabc.org](mailto:nbedesem@fsabc.org) by September 18<sup>th</sup>. Thank you.*

**TOTAL PAYMENT \$ \_\_\_\_\_**

Check payable to Family Service (memo: golf outing)

Credit Card (circle one)    Visa    MasterCard    Amex

Name on card \_\_\_\_\_ Expiration \_\_\_\_\_

Card number \_\_\_\_\_ Security code \_\_\_\_\_

Signature \_\_\_\_\_

*The official registration and financial information of Family Service Association of Bucks County may be obtained from the Pennsylvania Department of State by calling toll free, within Pennsylvania, 1-800-732-0999. Registration does not imply endorsement.*